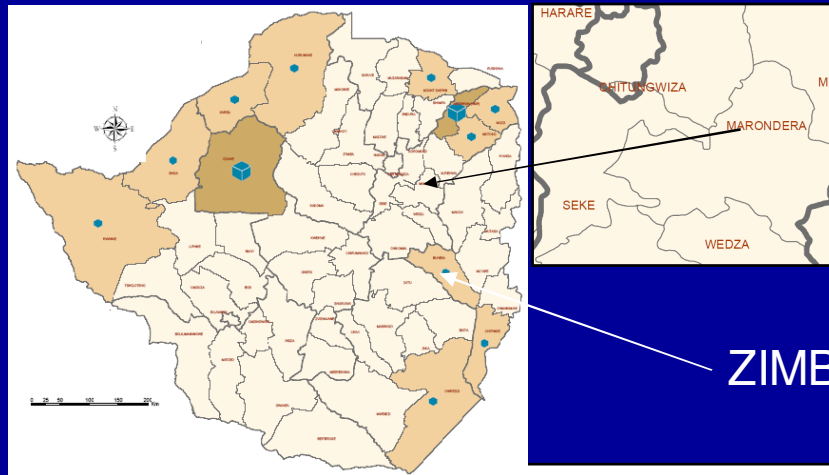


IWRM
OPERATIONALISATION
PROCESS, CHALLENGES AND LESSONS
FROM LOWER MANYAME CATCHMENT OF
ZIMBABWE
BY EDWARD GUZHA (ZCWP)

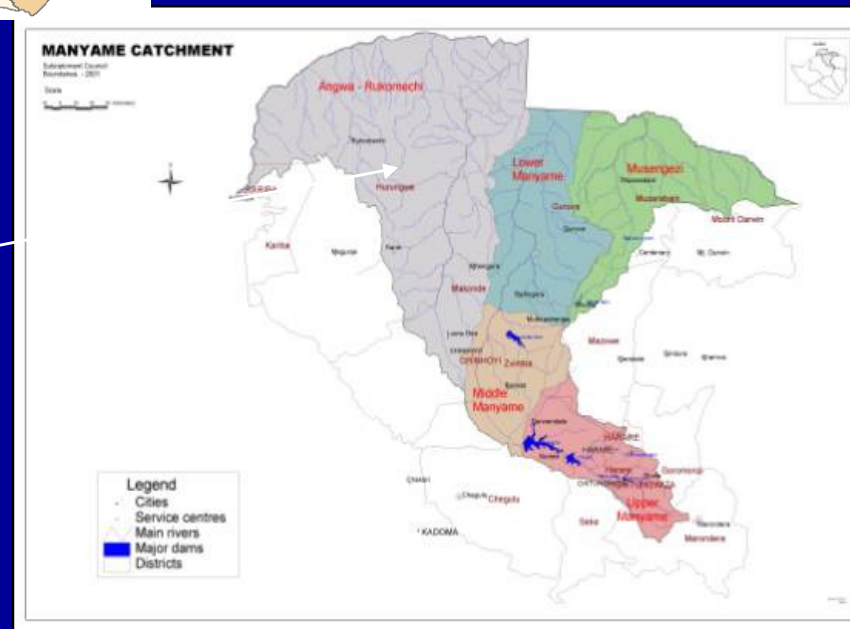
IWRM INTERNATIONAL CONFERENCE
10- 12 MARCH 2008
CAPE TOWN ICC

IWRM DEMONSTRATION AREA



ZIMBABWE

LMC IWRM DEMONSTRATION

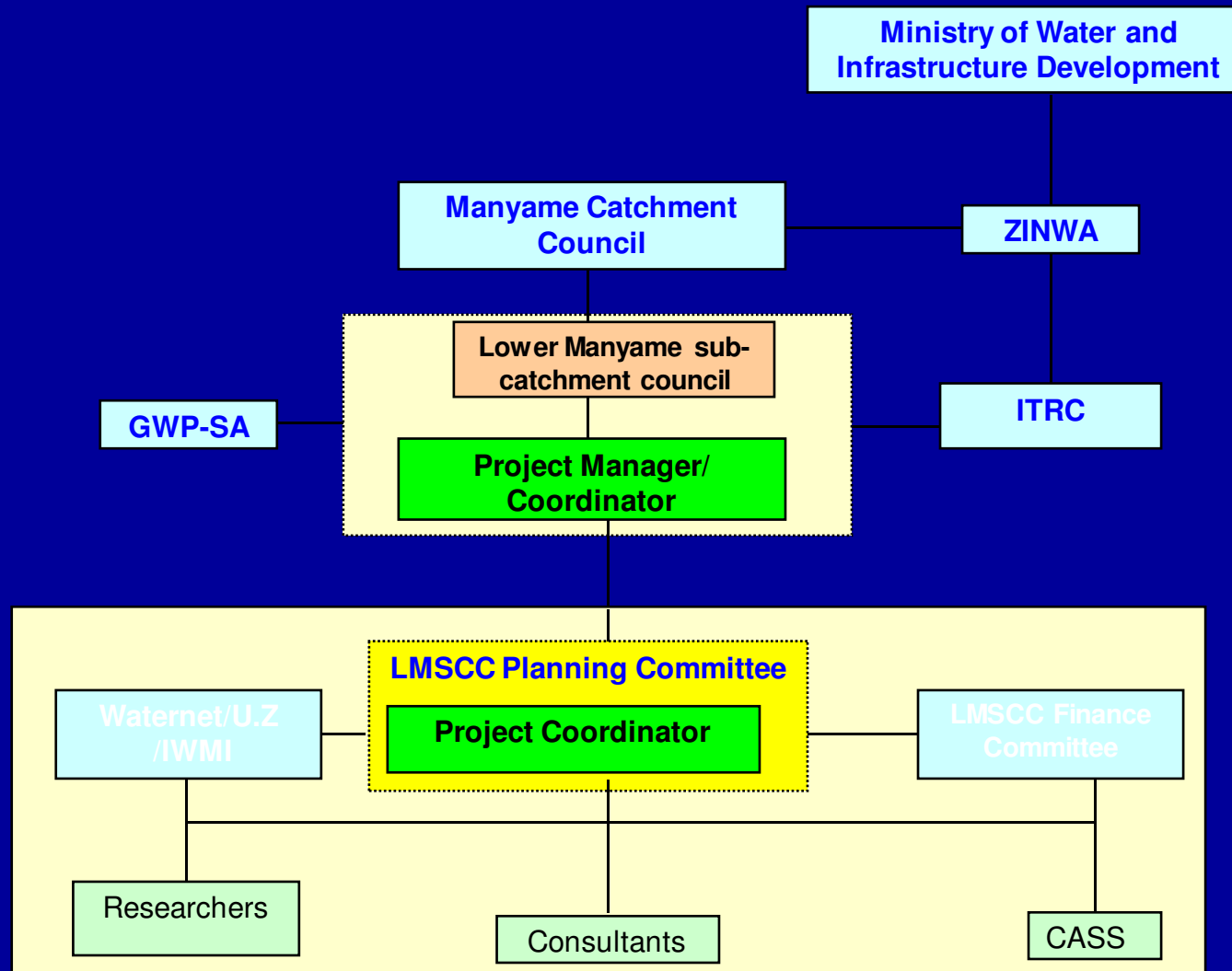


Project objectives

To demonstrate IWRM operationalisation and through the process:

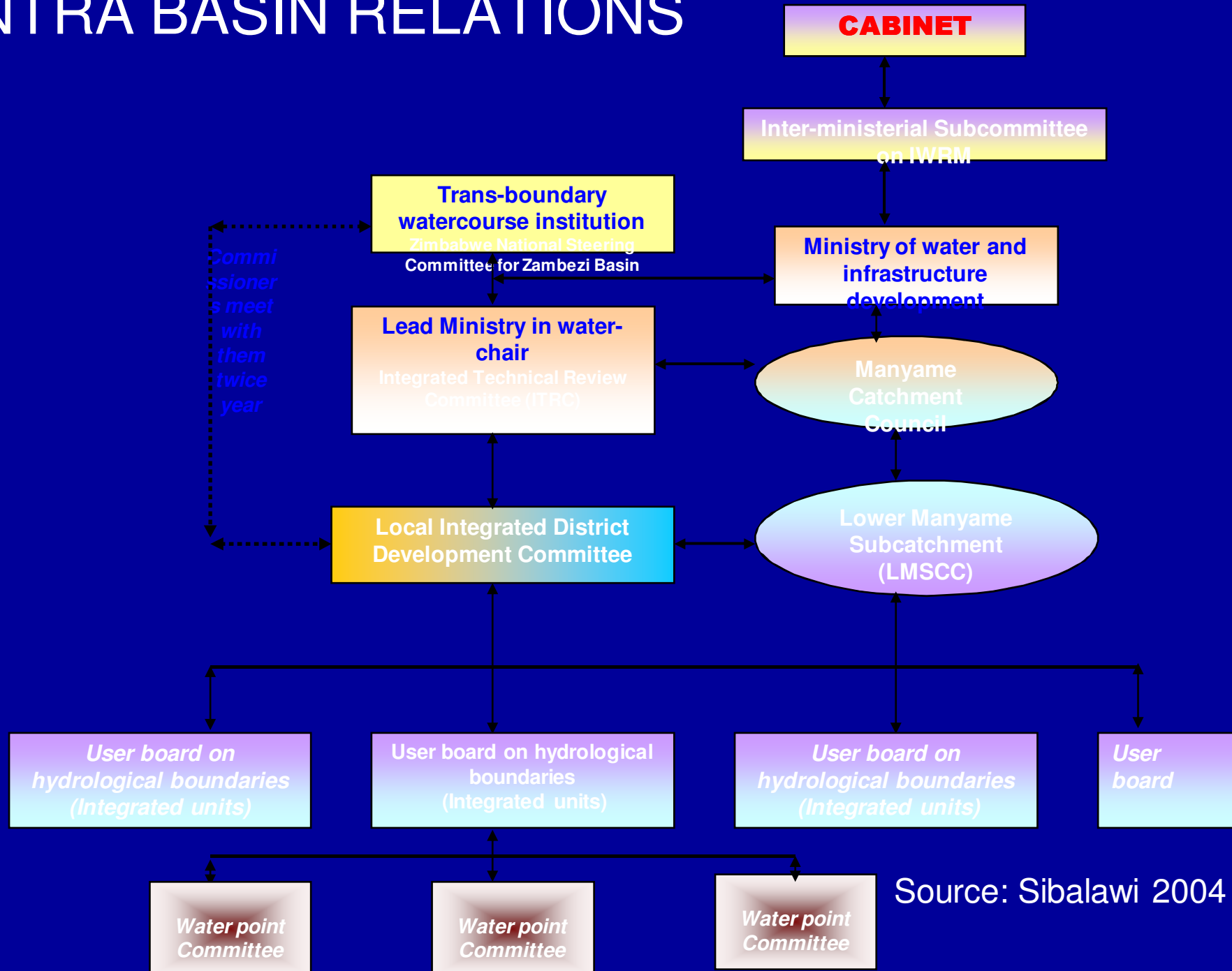
- Develop the LMSC IWRM Plan (COP)
- Establish and formulate concept proposals for key water resources development needs of the Sub-catchment.
- Establish and develop relevant concept proposals for water resources management and conservation needs
- Capture and document experiences of IWRM operationalization

INSTITUTIONAL ARRANGEMENTS STAKEHOLDERS INTERACTIONS



Source: Sibalawi 20

INTRA BASIN RELATIONS

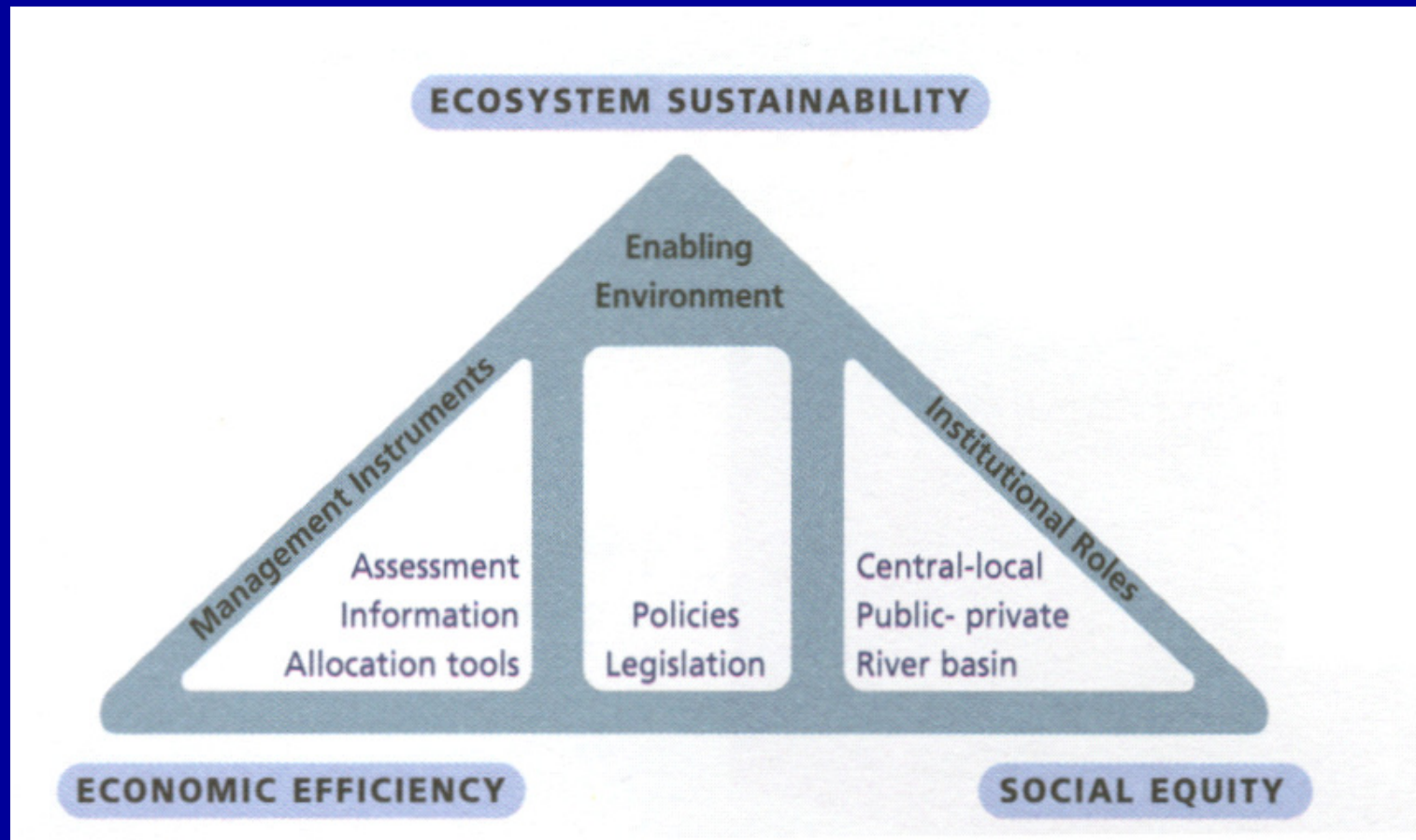


Source: Sibalawi 2004

Implementation Process

- Baseline survey
- Community capacity building
- Research
- Consultants services
- Field visits

KEY IWRM ISSUES



The challenge was to balance the three Es

What has been done ?

- Realisation of the finite nature of water
- Management being done at local level
- Stakeholder participation resulted in increased revenue
- Economic and social needs for water being realized
- Women playing an important role IWRM including politics

Recent reported outcomes

- Increased food production particularly market gardening
- Women groups doing value addition of food such as groundnuts and soya beans
- High value crop production is being reported
- Drives and attempts to link with international markets
- Health and nutrition benefits increased

(Source: Guruve RDC annual report 2006)

LMC made use of key IWRM pillars

- *Institutional roles*
- *Management instruments*
- *Enabling environment*

Activities

- Orientation meetings of the LMSCC
- Official project launch and appointment of project coordinator
- Commissioning of consultants and researchers in the project
- Reconnaissance field visits to problematic sites, e.g. gold panning sites.
- Stakeholder consultative outreach meetings
- Workshop for the researchers and consultants.

Stakeholders lessons

- No legislation is fully IWRM compliant
- *Hot spots* on the ground should be addressed.
- IWRM provides a platform to address 3Es
- Political commitment at all levels is critical for IWRM
- Legal conflicts and power issues should be dealt with
- IWRM operationalisation must align with local needs, interests and national priorities.

Major challenges

- **For GWPCWP the challenge was managing ownership political sensitivity related to dual ownership**
- **Stakeholder buy-in in the project especially by existing government institutions such as the RDC, AREX, DDF.**
- **Lack of financial resources to invest in visible infrastructure**
- **Stakeholders felt short-changed**
- **Stakeholder needs at community level are urgent**

Major lessons for GWPSA

- **The ‘dual ownership’ of an IWRM demonstration project must be catered for upfront**
- **Roles and responsibilities of all stakeholders must be defined**
- **Institutional capacity building critical**
- **Multi-disciplinary teams at local level critical**
- **High-level political support (at national levels) is as critical**
- **GWPSA need to be sensitive to the relevant authorities and seek their support**

What does not work

- Do not try to achieve IWRM overnight on wider scale
- Decentralisation without power and adequate resources
- Not a fit all jacket need to be contextualised at local level
- Nice and politically correct legislation which cant be implemented
- Conflicting parallel legislation
- Lack of focus to particular urgent needs at a time

CONCLUSIONS

- IWRM operationalisation is not easy
- No blue print guidelines for IWRM
- Adaptive approach should be used
- LMC IWRM has provided critical lesson for improving future IWRM projects
- Can work at Macro scale starting at micro-scale
- Micro + Micro + Micro = Macro (form 4 Mathematics