



iKapa GDS

Water Sector Implementation Plan

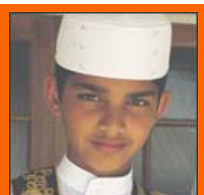
11 March 08

Governance and Integration

Department of the Premier



Department of the Premier
11 March 2008



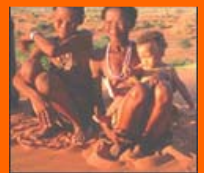
Purpose

- Demonstrates alignment btw. National Department's and the iKapa GDS
- Alignment between District, Local, Provincial and National with the iKapa GDS
- Strategic cohesion on water between National, Provincial and Local government
- Transversal planning in line with the iKapa GDS process
- Adoption of IWRM principles in our approach



iKapa GDS: Strategic Approach

- Developmental state
- Infrastructure-led
- Knowledge-based
- ***Shared growth***
- Social capital
- Spatial focus
- ***Sustainable development***
- Institutional leadership



POLICY CONTEXT: iKapa GDS White Paper



iKapa Objectives:

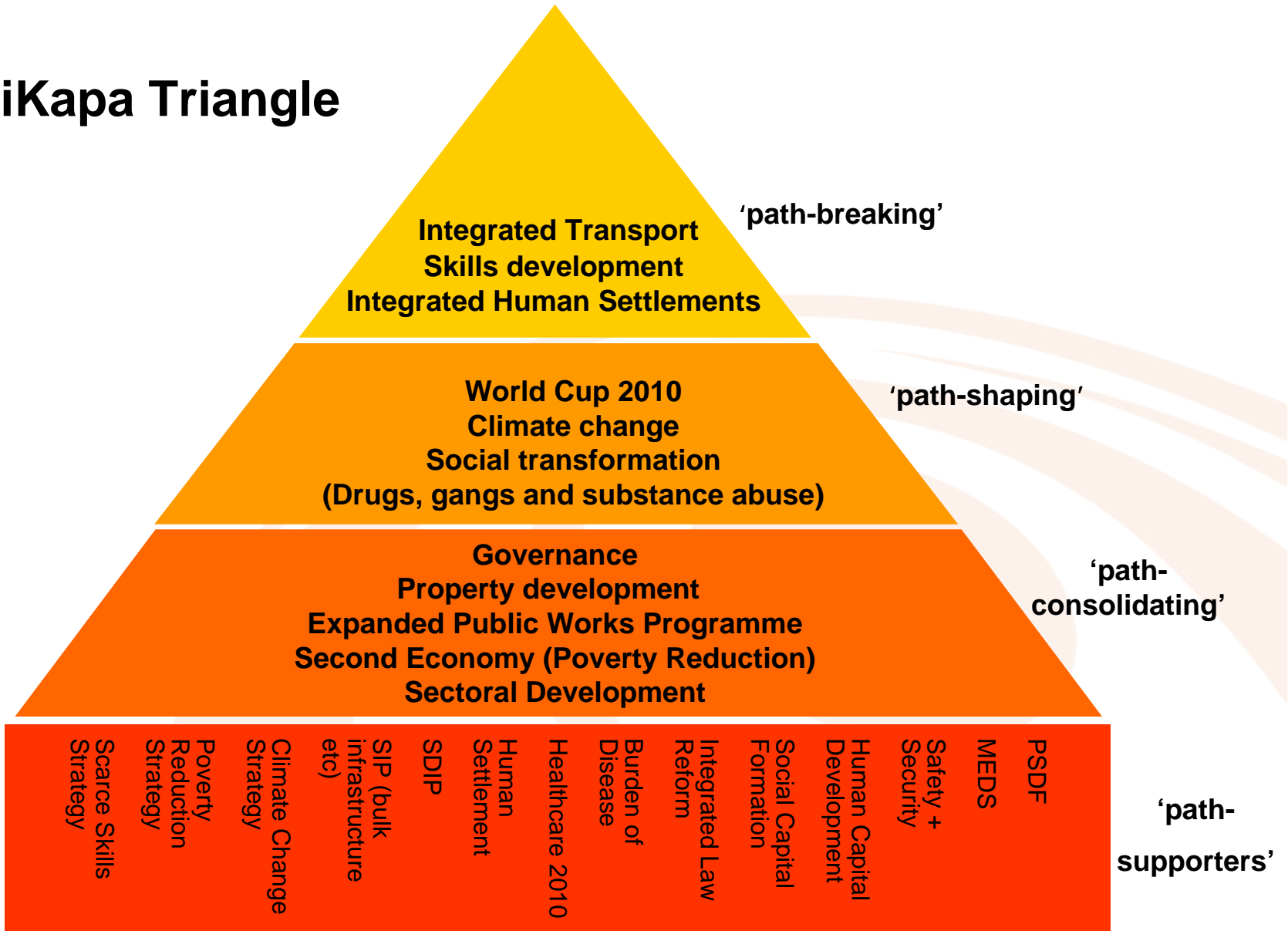


iKapa Goals

- Broaden economic participation and poverty reduction
 - **Efficient and effective infrastructure**
 - Liveable communities
 - Resilience and tolerance within and btw. communities
 - Enhance human capacity via improvements in the health, education, welfare and safety of individuals and communities.
 - **Sustainable resource use**
 - **Greater spatial integration**
 - Effective public and non-motorised transport
 - **Effective governance institutions**
- Grow and share the economy
 - Build a more equal and caring society: poverty eradicated
 - Promote ecological sustainable development
 - **Foster greater spatial integration**
 - Ensure effective governance & institutional strengthening

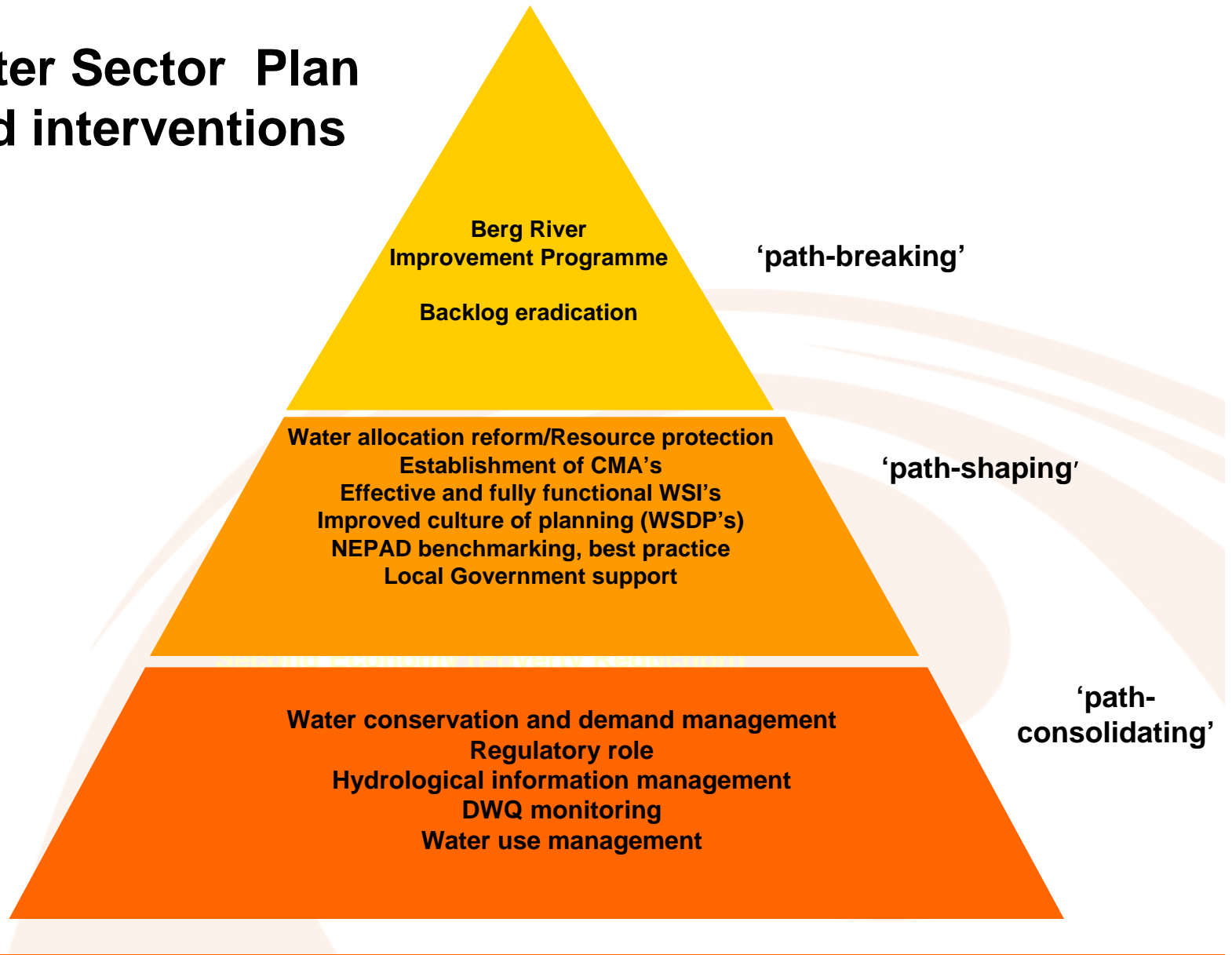


iKapa Triangle



Department of the Premier
11 March 2008

Water Sector Plan lead interventions



Summary of iKapa GDS & DWAF WSP Lead Interventions



iKapa iGDS	DWAF Water Sector Plan
Path-Breaker	
Integrated Human Settlements	Bulk water infrastructure and reticulation
Path-Shaper	
Climate Change	Water Resource Protection and improved water usage
Path-Consolidators	
Governance	Support and improve government water sector planning
EPWP	
Second Economy	Water Allocation Reform and financial Assistance; WFW & WFF; Forestry LED activities; Trees for Food
Path-Supporters: iKapa Strategies (Climate Change Strategy, MEDS, SIP etc.)	PGWC water consumption impact as a consumer. Institutional commitment to water sector.



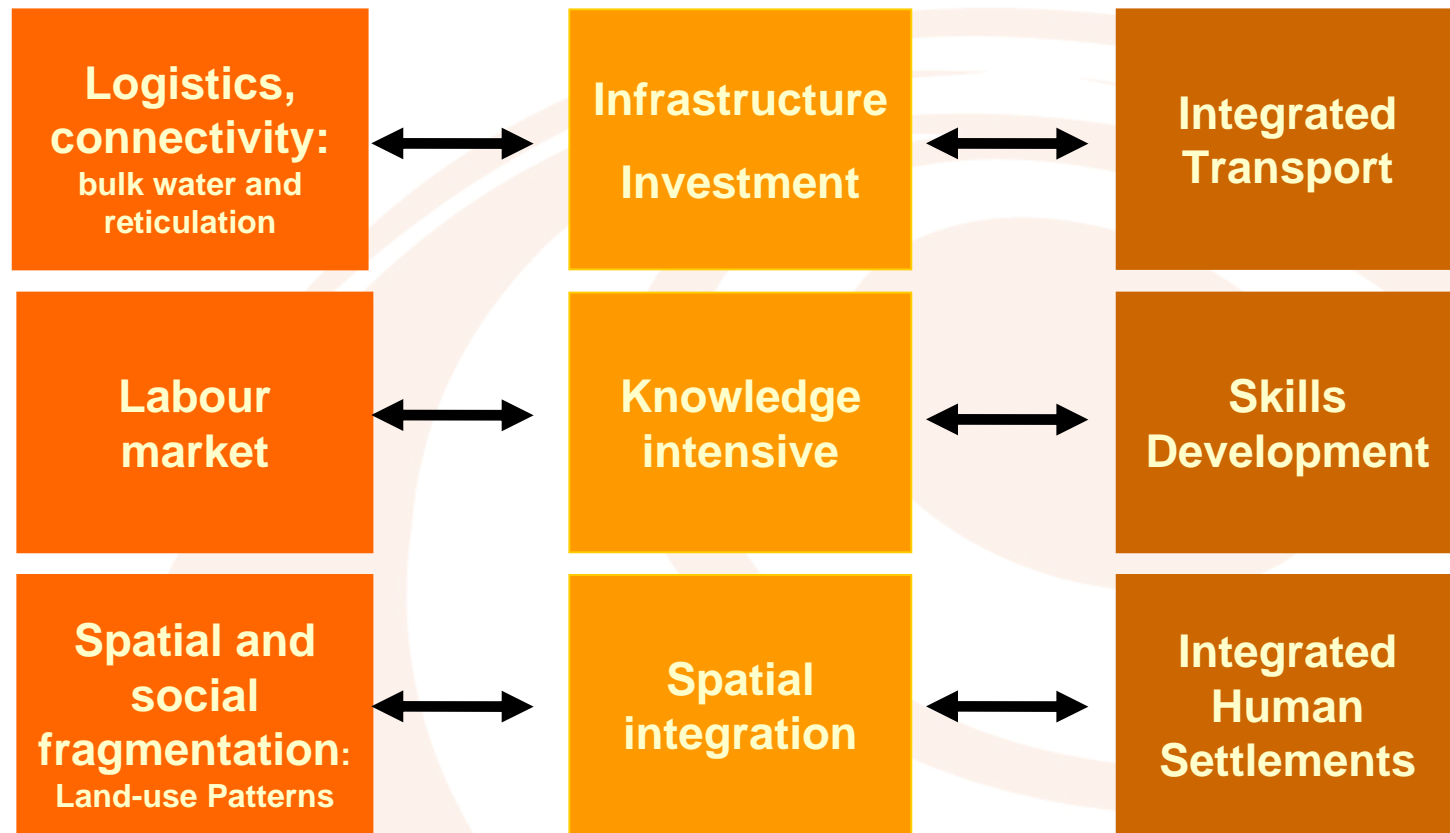
Shared growth & integrated sustainable development



Constraints

Strategic response

Strategic intervention 'path breakers'



In Summary



Infrastructure investment
(Bulk Water & Reticulation)

+

Knowledge-base

+

Spatial & Social integration
(Reticulation for densification)

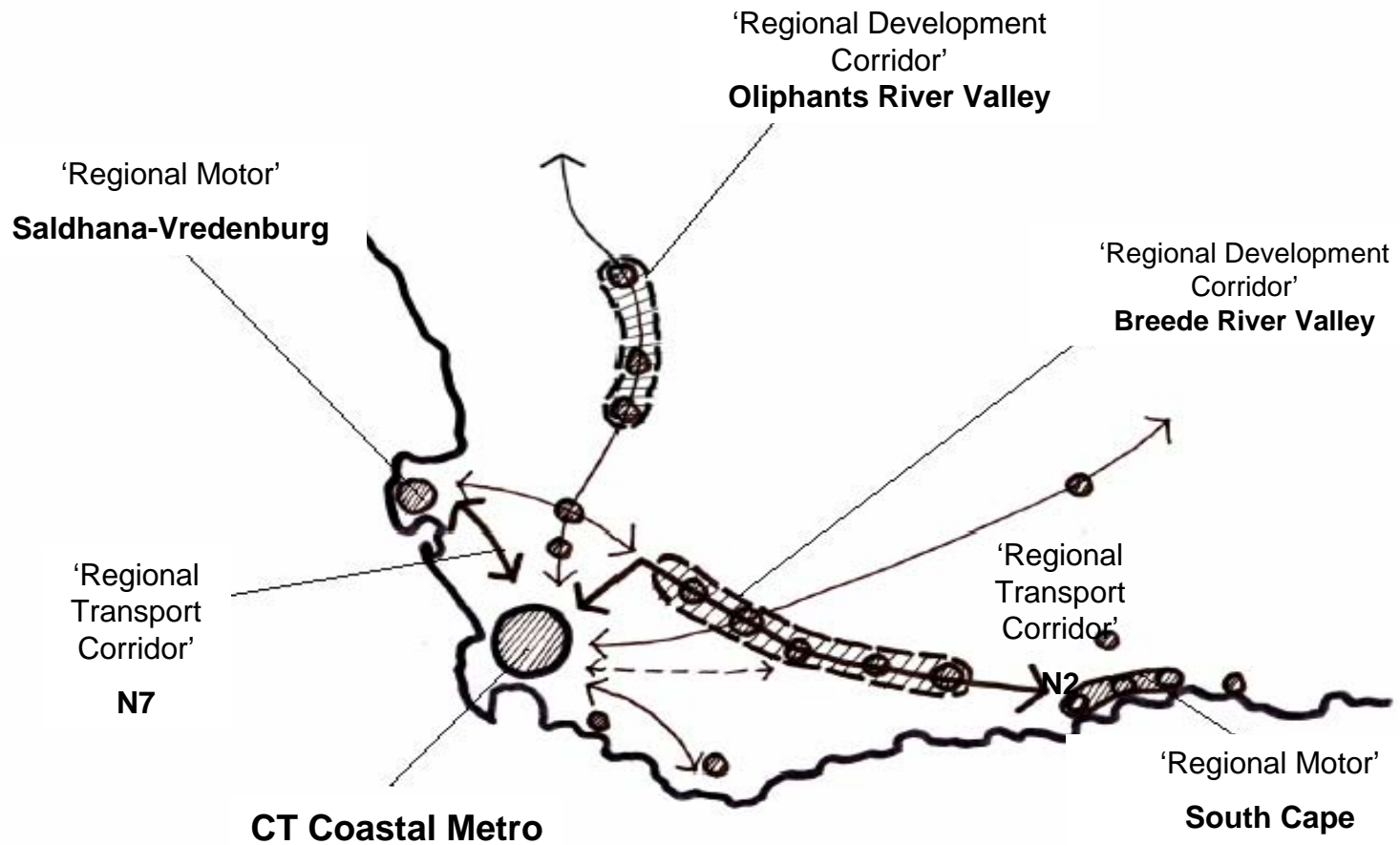
=

shared growth and integrated sustainable development





PSDF: Primary areas of economic support



DWAF WATER ACTION PLAN: INVESTMENT FOOTPRINT



Backlog Eradication
R20.2 mil

Masibambane 3
R6 mil

Regional Bulk
Infrastructure Fund

Clanwilliam Dam
R+1 mil

Refurbishment of
Existing Schemes

Upgrading of WWTW

Langebaan Aquifer

Berg River Storage Project
R300 mil

Masibambane3:
CSO Projects
R525 K

Water Allocation Reform
R32 mil

Financial Assistance
R12 mil

Working for Water
R58 mil

Assesment for Forestry Potential

Survey of LED Activities

Trees for Food

Incorporation of Livelihoods and UF into IDP's

DWAF WATER ACTION PLAN: INVESTMENT FOOTPRINT

Institutional Regulation
2007/08 - R 2.3 mil
2008/09 - R 4 mil

Masibambane 3:
CSO, WSA & Regional Forums
2007/08 R 33.55 mil
2008/09 R 15.45 mil (proposed)

Sector Collaboration
R 1.1 mil

Masibambane 3:
Regional Projects
2007/08 R 3.8 mil
2008/09 R 2.2 mil

Regulation of Forest Management

Formation & Registration of FPAs

Implementation of
Ecological Reserves req.

Improvement of WRM
Hydrological Network
R 16 mil

Drinking Water Quality Management Programme
R 2.7 mil

Water Management Campaigns
R 5.8 mil



iKapa GDS implementation

Implementation of iKapa GDS dependent on:

- Policy coherence and coordination
- Integrated planning and implementation
- Integrated resource mobilisation
- Integrated service delivery and strategic action
- Participatory and collaborative governance and delivery





Alignment btw. DWAF objectives/goals & iKapa GDS

iKapa Goals

- Broaden economic participation and poverty reduction
- Efficient and effective infrastructure
- Sustainable resource use
- Greater spatial integration
- Effective governance institutions

Water Sector Plan Goals

- Strengthen integrated planning addressing delivery and socio-economic development targets
- **Develop sector leader role and reform of water institutions**
- **Ensuring adequate water for sustainable growth and development**
- Integrated programme of support and development of Water Services Governance and Provider functions
- Water Management Institutions established and water use compliance regulated



Critical challenges for Water Sector

- How much growth can the current water infrastructure “absorb” before more water is required?
- Is it able to achieve economic growth of 6% and more?
- Aging bulk infrastructure (water losses), challenges with aging infrastructure, skills shortage in water management
- Addressing backlogs versus refurbishment of existing infrastructure



Critical challenges for Water Sector

- Climate Change – rainfall patterns and the impact of flooding, disaster management and risk mitigation
- Water scarcity and ecosystems deterioration
- Critical conditions of rivers
- Over utilised ground water & limited water resources
- Water for agriculture (development targets) – can rainfall patterns, crop yields and crop implications be modelled to prepare for food security supply and demand challenges (R 27 bn in agric exports)



Policy Challenges

- **Constitutional imperative to deliver basic water services (informal settlements)**

VS

- **Constitutional imperative to provide adequate shelter including the provision of water**
 - What are the cost implications of these two potentially conflicting policy positions and do they not mitigate against spatial densification and reinforce informal settlement patterns ?



Policy Challenges

- Provision of bulk infrastructure for human settlements resulting in sprawl

VS

- Provision of bulk infrastructure for human settlements resulting in increased density and spatial integration

- There is potential for to redress/influence:

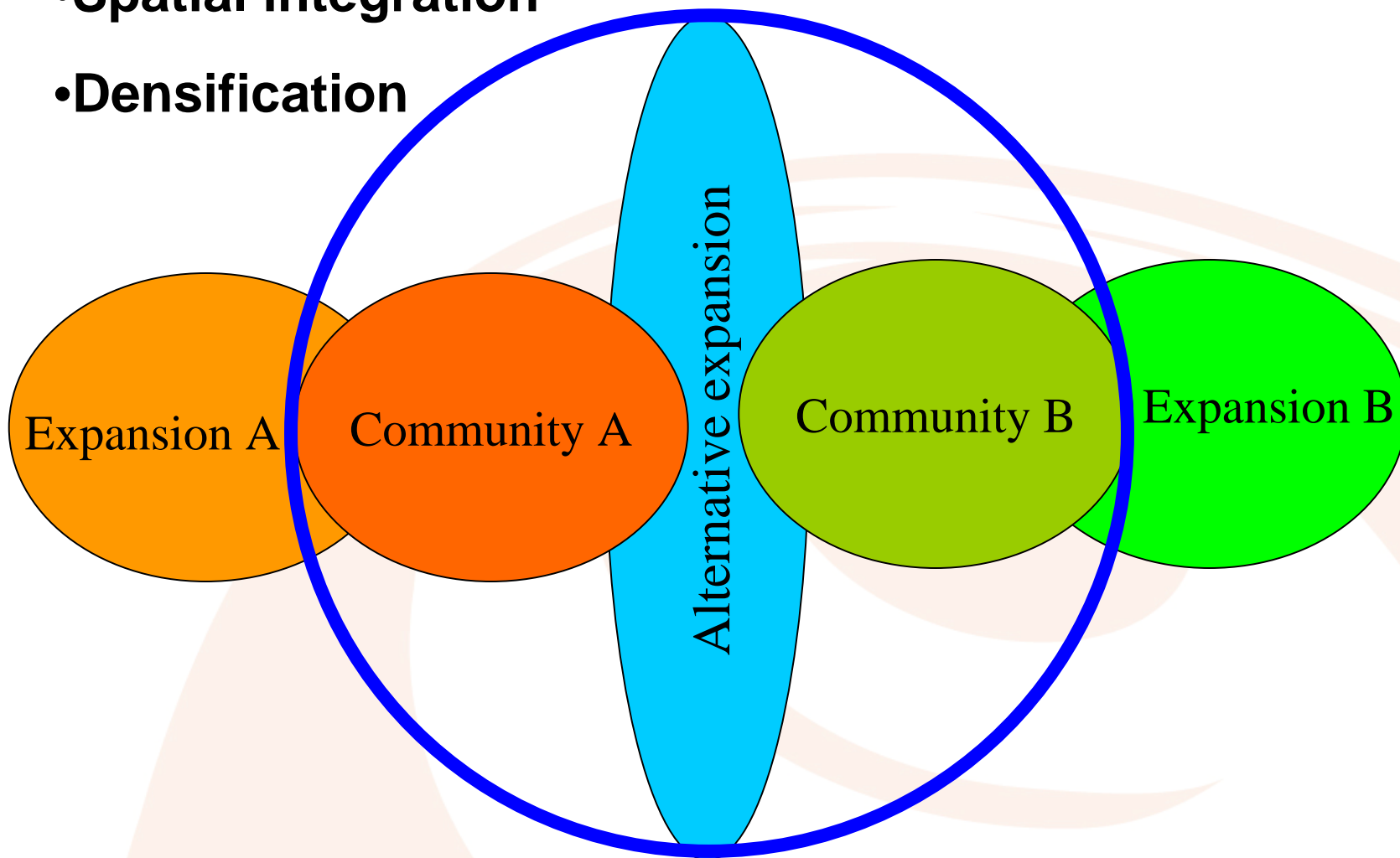
- spatial planning decision-making processes in DWAF which might supports historic spatial patterns
- current spatial planning that will enforce the implementation of an urban edge and associated densification patterns





Land-use Planning supporting:

- Spatial integration
- Densification



Policy Challenges

- Lack of adequate budget for maintenance and upgrades by local government, i.e. revenue generated through water sales not utilised for maintenance and upgrades
- No legislation that mandates local government to ring fence a proportion of revenue for maintenance and upgrade
- Potential to influence ring fence revenue through:
 - Intergovernmental Relation Act
 - Integrated Development Plans



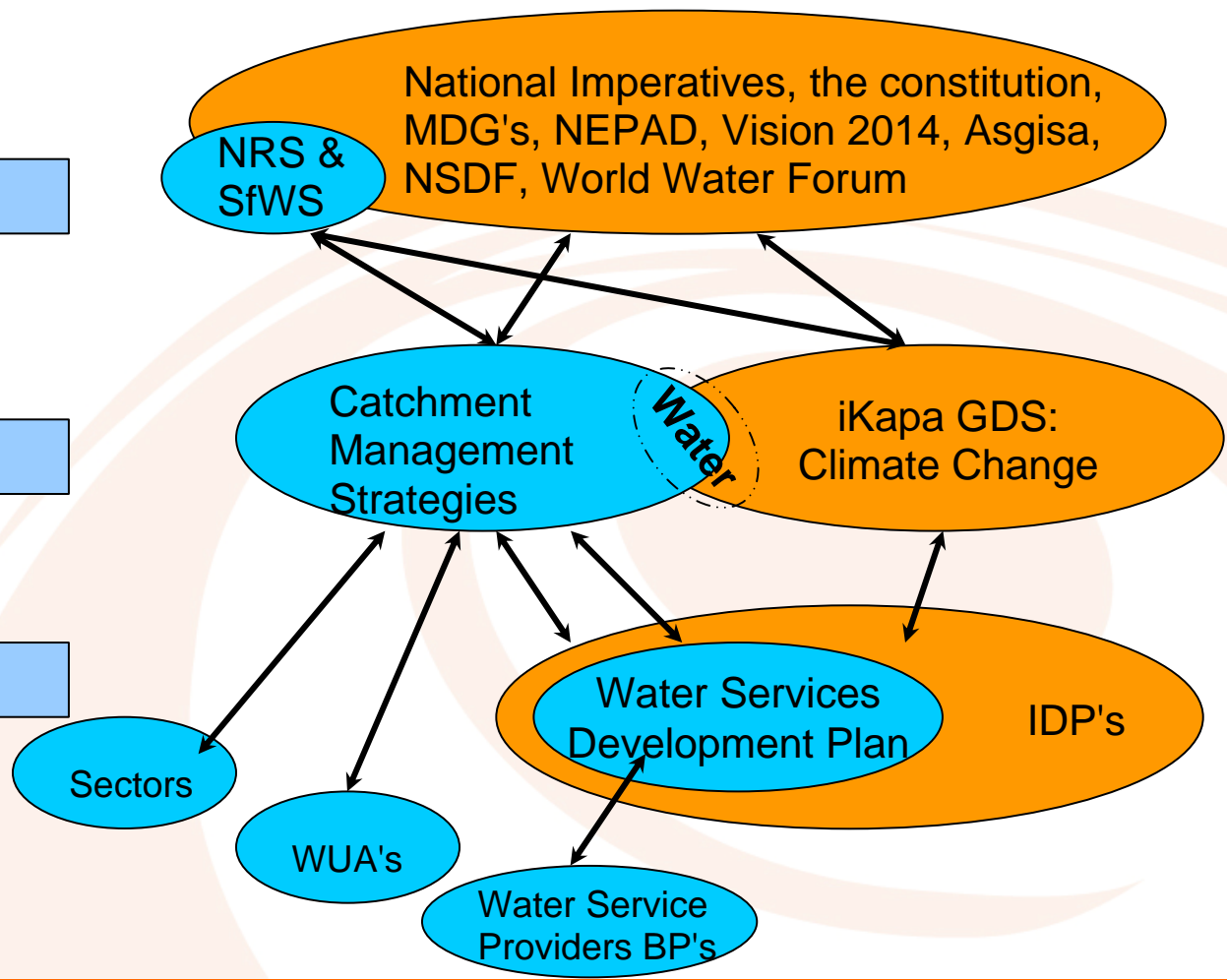
Harmonising policy frameworks & plans: Water related Planning



National

Provincial

Local



Policy Challenge

- Water major source of revenue generation for local government

VS

- Integrated Water Resource Management principles, environment, social equity and economic



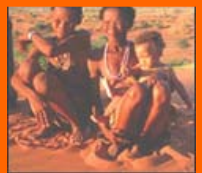
Progress to date

- Approved by Management Committee of the Dept of the Premier (DotP)
- The DotP Director-General has approved the roll-out of Provincial one-on-one engagements in partnership with DWAF
- Next submission to Management Committee secured for end March 2008 (phase 1 finalised)
- Followed by Provincial Top Management
- And finally Cabinet with linked performance targets around April – June 2008



Way Forward

- Approval to present to PTM, G & A and Cabinet
- Use of Water Sector Cost Benefit studies on capital and ops costs of Water for integrated development planning for LM's
- Use of Water Reticulation Planning Systems to drive density and spatial planning processes for LM's
- Use of Water Sector Maintenance Plans as part of EPWP upskilling program – Water Supply Maintenance Management Program
- Development of new technology for water mitigation and water quality management and adaptation technology



Making IGR work in reality

- DDG Regions
- Chief Directorate – Sanitation
- Chief Directorate – Water Services
- Directorate – Planning
- Masibambane
- DPLG – LM's, Water Resources Commission
- Masibambane sponsors
- SALGA, Mvula Trust
- 9 Regions
- Consultants
- And thanks to anyone I have erroneously excluded



Special Thanks

- Rashid Khan, Willie Enright, Simphiwe Maschilla, Tony Brutus and Pam Taylor
- Nthato Gobodo, Anton Groenewald, Jessica Katz
- A real example of IGR in action





Thank You



Department of the Premier
11 March 2008