



water & forestry

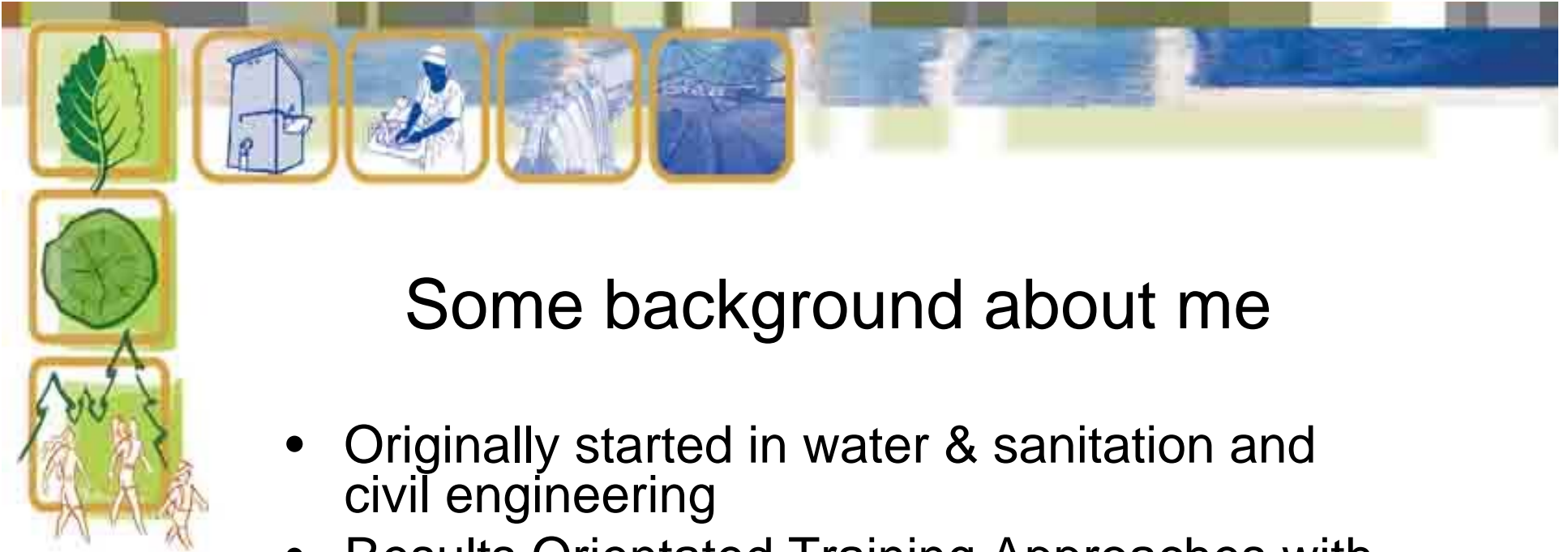
Department:
Water Affairs and Forestry
REPUBLIC OF SOUTH AFRICA



A rights based approach to IWRM
empowering communities to engage in water
management institutions for improved livelihoods.

Danida support to IWRM
South Africa

Introduction



Some background about me

- Originally started in water & sanitation and civil engineering
- Results Orientated Training Approaches with ILO (Danida) in ASEAN
- Military conversion in Belarus
- Team leader for G7 Nuclear Safety Working Group on closing Chernobyl NPP
- All of this has lead to a philosophy of believing in the strength of people on the ground



Overview of presentation

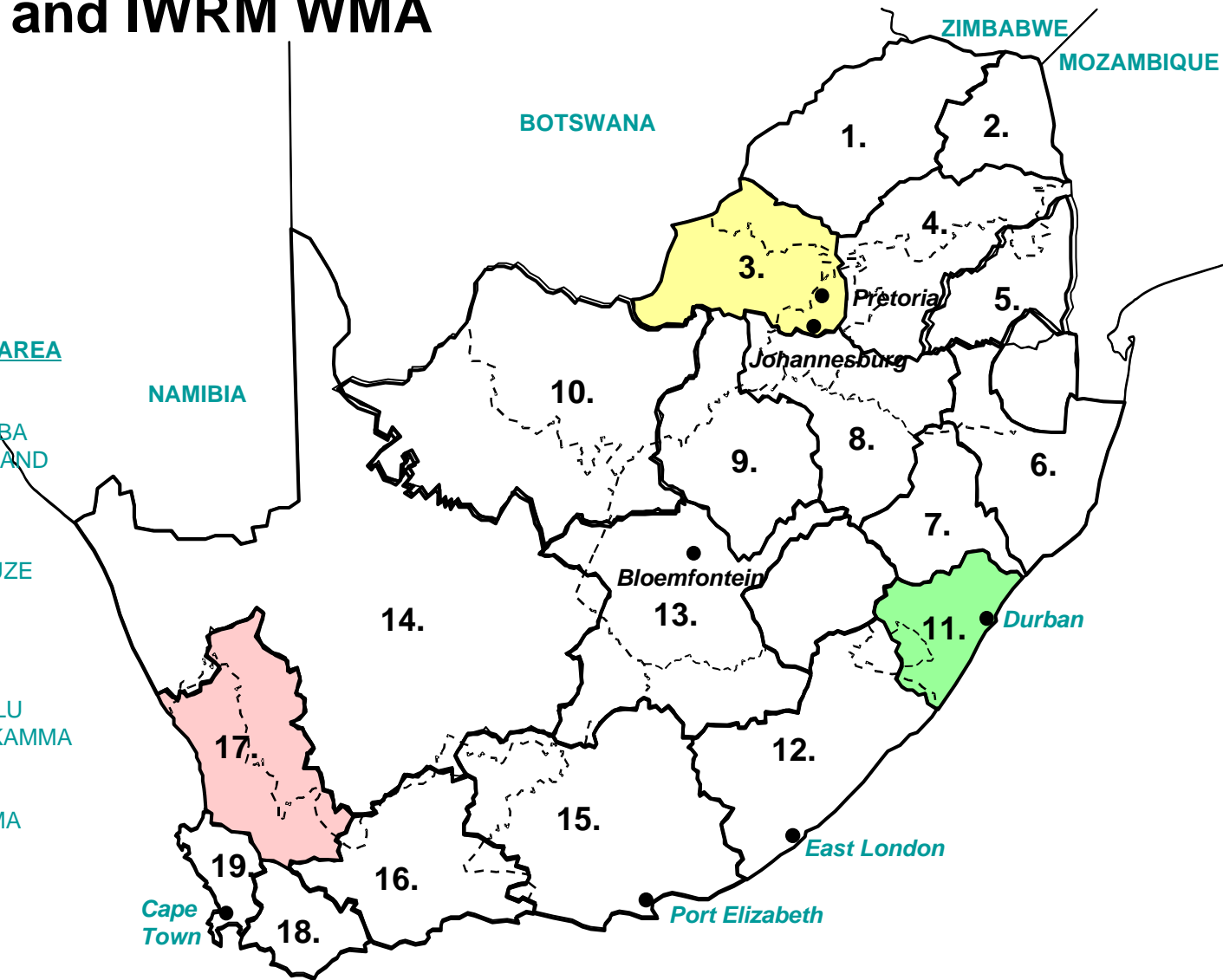
- Overview of Danida support
- Background to the approach
- Implementation, backstopping, monitoring and evaluation
- View from the communities



CMA and IWRM WMA

WATER MANAGEMENT AREA

1. LIMPOPO
2. LUVUVHU AND LETABA
3. CROCODILE (WEST) AND MARICO
4. OLIFANTS
5. INKOMATI
6. USUTHU TO MHLATUZE
7. THUKELA
8. UPPER VAAL
9. MIDDLE VAAL
10. LOWER VAAL
11. MVOTI TO UMZIMKULU
12. MZIMVUBU TO KEISKAMMA
13. UPPER ORANGE
14. LOWER ORANGE
15. FISH TO TSITSIKAMMA
16. GOURITZ
17. OLIFANTS/DOORN
18. BREEDE
19. BERG





Essentials for making IWRM work

Cooperative Governance



Within DWAF

- Main challenge for IWRM II is the integration of WRM and Water Services
 - This being achieved through collaboration with Masimbambane Programme particularly in terms of common approaches
 - Demonstration projects
 - Rights-based Approach
 - Gender, Poverty Alleviation and Employment Generation



Inter-governmental

- Considerable effort has been taken to engage other government departments
- Creating fora for dialogue
- At an operational level
 - Bring all key actors on board wherever possible with respect to pilot/demonstration projects to ensure integrated approaches and linkages to local and provincial development plans
 - Use of Metro to capacitate other municipalities



Other donors and NGOs

- Task has been to ensure complementarity's and avoid duplication
- Involve donors in key milestone activities
- Draw on their experiences e.g. FAO and food security ITC/ILO gender, poverty alleviation and decent work
- Ensuring real collaboration on the ground e.g., Netherlands,
- Partnering funding



Key to making NWA and IWRM a success

Empowerment of Marginalised Groups to participate in WMLs



Fundamentals

Men and women have the right to live their lives and raise their children in **dignity**, free from hunger and from fear of violence, oppression or injustice. Democratic and participatory governance based on the will of the people best assures their rights [UN Millennium Declaration p.2]



Water Reform

- Redress the past
 - The particular South African situation compared with other African countries
 - Prof Kadar Asmal – basic human rights – Constitution
 - Enclave economy (this combined with Apartheid influences power relationships)
- Water allocation reform
- Previously (and existing) marginalised groups must be capacitated to participate in the reform processes.
- Perception and realities - Who gains and loses from reform?



Gender representation in WMIs

- NWA states particular attention to rural black women
- DWAF policies
- Realities
- What the IWRM Programme is doing to address these issues
 - Embedding gender, poverty alleviation and decent work into CMA planning (also lead into WfGD)
 - Ditto in IWRM + IDP planning in local government



Participatory training – evolution

- The happy sheet model
 - After about week you realise you didn't have a reason to be so happy!
- The action plan model
 - After about a week you realise that you were not given the tools to implement the plan
- Genuine empowerment model
 - Takes time and investment



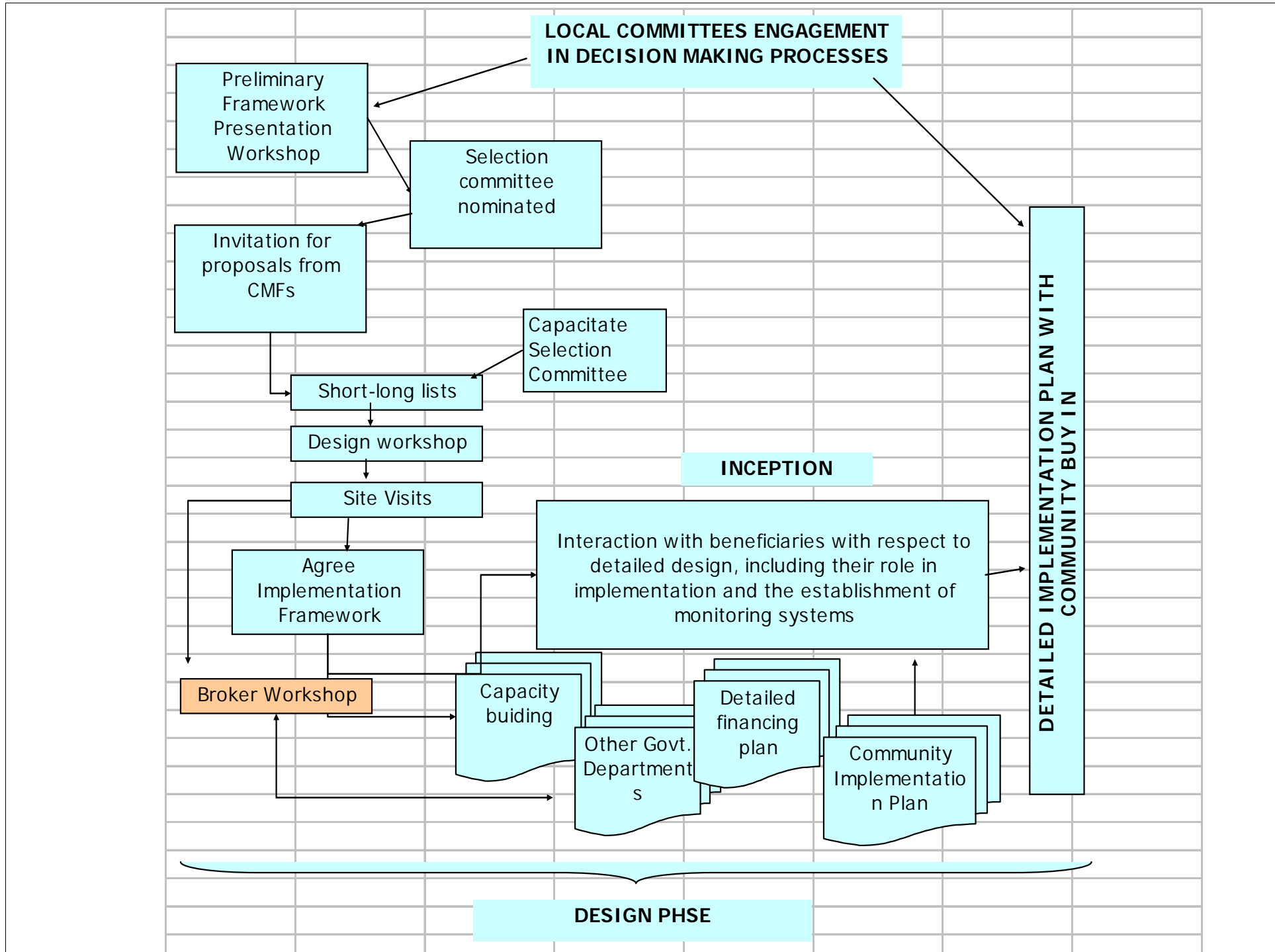
Over-riding

- *How do we best go about creating a level of under-standing in rural communities when many are semi-literate as a result of past policies, and many, in particular rural women, are struggling to manage families and get food on the table and basically do not have time to attend training and - what is the use of a certificate of attendance if it does not resolve their daily problems?”.*



The empowerment conceptual model

- Link capacity development to the concept of demonstrating that implementing IWRM can improve livelihoods and community well-being
- Then communities will understand water management issues and be able to inter-act with new institutions





Lessons for WfSG&D

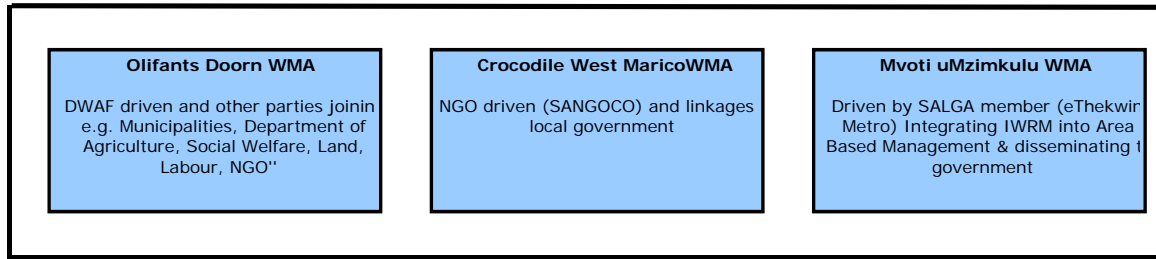
Fundamental to the approaches adopted under the IWRM programme are:

- Listen to the community
- Allow them to develop into believing in themselves
- Capacitate them to articulate their rights to down-to-earth practical approaches

Above all:

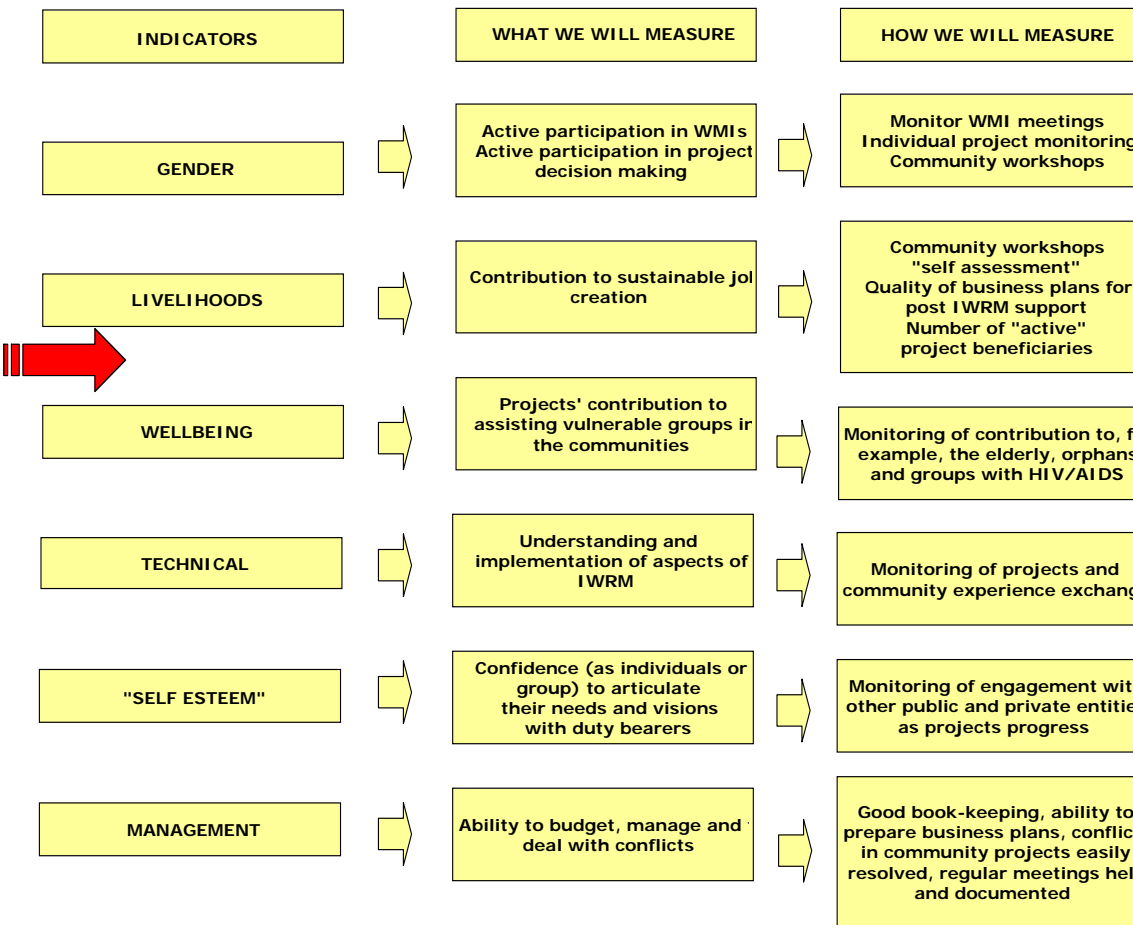
- ALLOW SUFFICIENT TIME AND RESOURCES
- AVOID “THROWING” LARGE AMOUNTS OF MONEY AT COMMUNITIES – MUCH CAN BE ACHIEVED WITH VERY LITTLE

FIGURE 3 THE THREE IMPLEMENTATION MODELS



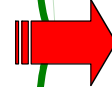
SUPPORT STRUCTURE

- Programme Management
- Procurement systems
- Ad-hoc technical support (e.g. water harvesting, grey water, groundwater pollution and waste management)
- Ad-hoc managerial support (e.g. monitoring accounts on monthly basis for level of disbursements, balanced score-cards for and possible associated problems)
- Ad hoc support for conflict resolution
- Support for developing organisational models for sustainability (e.g. associations, cooperatives)
- Building literacy & numeracy
- Community experience sharing workshops



PLANNED OUTPUTS TO SUPPORT "UP-SCALING" UNDER WATER FOR GROWTH & DEVELOPMENT

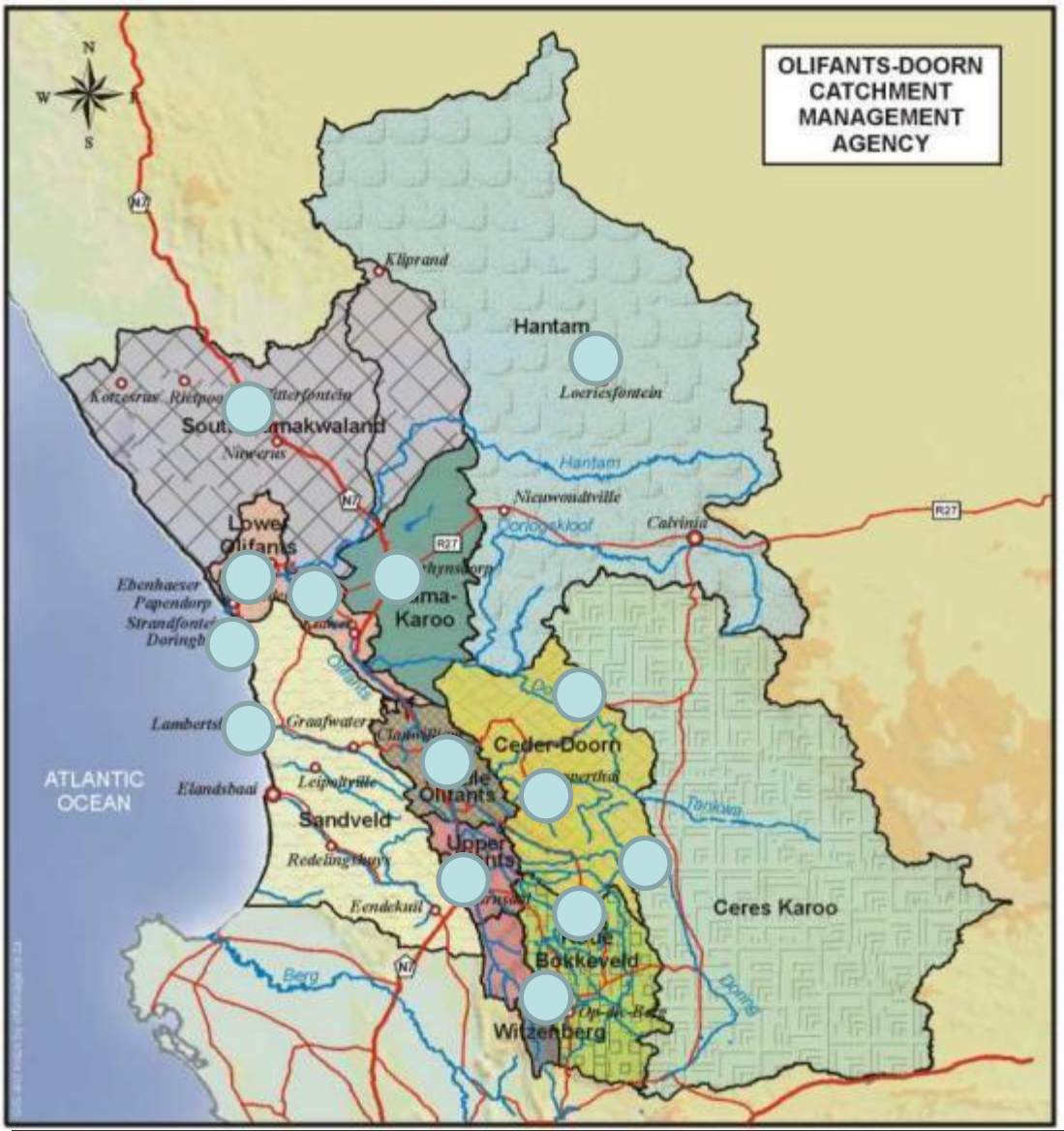
- Implementation framework (recommendations for implementing IWRM for poverty alleviation)
- Training modules for: CMA's, Local Government, NGOs or community based organisations
- Implementation guidelines for the three models tested under IWRM II
- Compendium of projects and other materials (e.g. DVDs) to act as inspiration for others.





Themes – Strand 3 Projects

- Food security – market gardens
- Environment – awareness, sustainable development, climate change & biodiversity
- Infrastructure – improved water efficiency
- Resource Poor Farmers – water (and land) reform & empowerment



- 11 Water Forums
- 7 Water User Associations
- 3 District Municipalities
- 4 Local Municipalities



Vukani Makhosikhazi Lamberts Bay Women



**Food Security
Empowerment of Women**





II



Swartruggens Ceres Karoo Groundwater Protection & Climate Change Monitoring



Groundwater monitoring & spring protection



Climate change monitoring



**Safer drinking water
In deep rural areas**





II

Organic Producers Wupperthal Emerging Farmers



**Poverty
eradication
& improved
food security**



Capacity building

**Job creation through
agriculture (organic
vegetables for baby
food)**





II

Vredendal Samewerk Boere (VSB)



Land & water
Reform
LORWUA



Emerging
Farmers

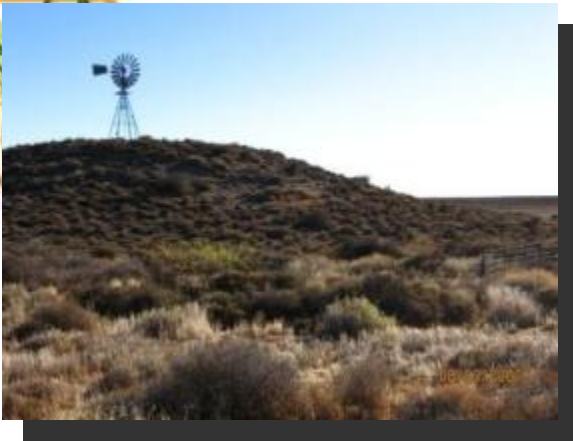




II

Loeriesfontein Emerging Stock Farmers

Land and water reform



Groundwater
management



Water and soil
conservation





II



Cederberg Emerging Farmer Forum



**Capacity Building for effective participation in
Water Management Institutions**



Budget Strand 3

Initial allocation: R1.5 million

Projects approved: R2.5 million

Spent to date: R 1 080 000

Average per project: R150 000



Successes

Capacity Building & Empowerment:

Proposal & budget write-ups

IWRM Conference – presentations

Use of financial systems

Involvement in Water User Associations

Female and youth participation & ownership

Poverty eradication focus





Successes

Partnerships:

Government departments – Dept Agri

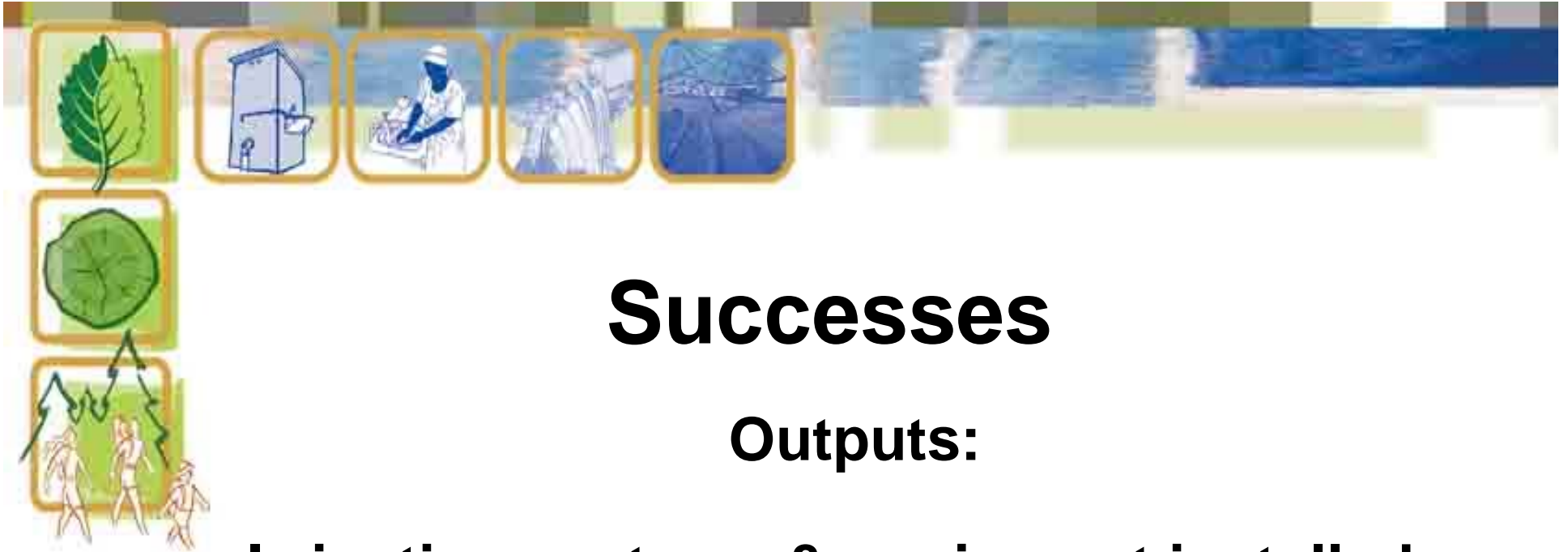
Water User Associations adoption of projects

NGO's & CBO's (SPP & GARC) - advocacy & empowerment

Commercial farmers – advice, ploughing, markets

Businesses – market for produce, discounts





Successes

Outputs:

Irrigation systems & equipment installed

Produce for household & sale

Organic certification

Marketing

Access to markets

Water IWRM awareness





Challenges

Partnerships

Access to resources – land, finances

Group dynamics - conflict

Longer term sustainability

Literacy levels

Dependency “Grant” culture

Remoteness of area

Embedding IWRM ethos (environment)



IWRM ... a journey not a destination



IWRM 1 - CAPACITY BUILDING – OUTCOME BASED

Community Water Awareness



Primary school learners from Molsvlei, Rietpoort and Vanrhynsdorp created art depicting the importance of water in their daily lives.



The learners built models wrote poems ...



.. and drew pictures about how important water is to life.



People of Stofkraal (Dust Corral) fetching water. The community utilise desalinated groundwater to meet their needs.



Forty learners participate in cleaning a stretch of the Olifants River close to Citrusdal.



The educational play "Johnny Smith" was performed by local learners, members of the Upper Olifants Water Forum and Inter-Church Youth Group.

IWRM 1 - CAPACITY BUILDING – OUTCOME BASED

Emerging Resource Poor Farmers



A partnership between Water Affairs and Forestry, Agriculture and the Matzikama Municipality aims to help to the Vanrhynsdorp emerging farmers cultivate fodder for their stock.



The Vanrhynsdorp emerging farmers aim to re-use treated sewerage water to irrigate fodder crops for their livestock.



Wupperthal subsistence farmers grow a variety of crops on small allotments. Water is channeled for kilometres from mountain streams along earthen and concrete canals.



In Wupperthal water loss is experienced due to many cracks and seepage along the canal. The micro-project uses a cost effective, lay-flat pipe to conserve water while creating greater awareness.



Emerging farmer workshops were held in the Witzenberg (above), Cederberg, Matzikama and Hantam regions of the Olifants-Doom.



Participants from Vredendal “buzz” their project’s strengths, weaknesses, opportunities and threats. Each group was completed a detailed questionnaire to provide a baseline situation analysis of emerging farmers in the Olifants-Doom.

IWRM 1 - CAPACITY BUILDING – OUTCOME BASED

Water Conservation & River Health



The high density housing suburb of Op-die-Berg Koue Bokkeveld. A large number of leaks were found here.



In the most severe instance a leak accounted for almost 350kl water consumed per month



The ladies of the Clanwilliam leak repair team hard at work replacing a leaking tap.



Complete leak repair kits were purchased and supplied to the repair teams,



Learners from the Witzenberg farm school study the ecology of the upper Olifants River.



Learners testing the quality of water to identify possible sources of pollution.

IWRM 1 - CAPACITY BUILDING – OUTCOME BASED Poverty Eradication & Food Security



The members of the Lamberts Bay Women's Food Garden group attending a planning meeting.



The local old-aged home some of the projects beneficiaries.



Inter-cropping and organic farming methods produce excellent crops (spinach, maize & watermelon).



Some of the healthy vegetables produced for the community kitchen, which feed people infected and affected by HIV/AIDS.



Drip irrigation fed by small water tanks help conserve precious water, while shade netting gives some protection from winds, reducing evaporation.



Dorcas gardeners proudly show their work.